

MAPS

# This 3D Map Shows the Imminent Transformation of Miami's Skyline

High-rises continue to mushroom in the city's booming downtown.

TANVI MISRA | [@Tanvim](#) | 11:58 AM ET | [Comments](#)



Miami Downtown Development Authority

Miami's downtown has experienced an incredible boom in recent years. [Nancy Trejos](#) of *USA Today* [explains](#):

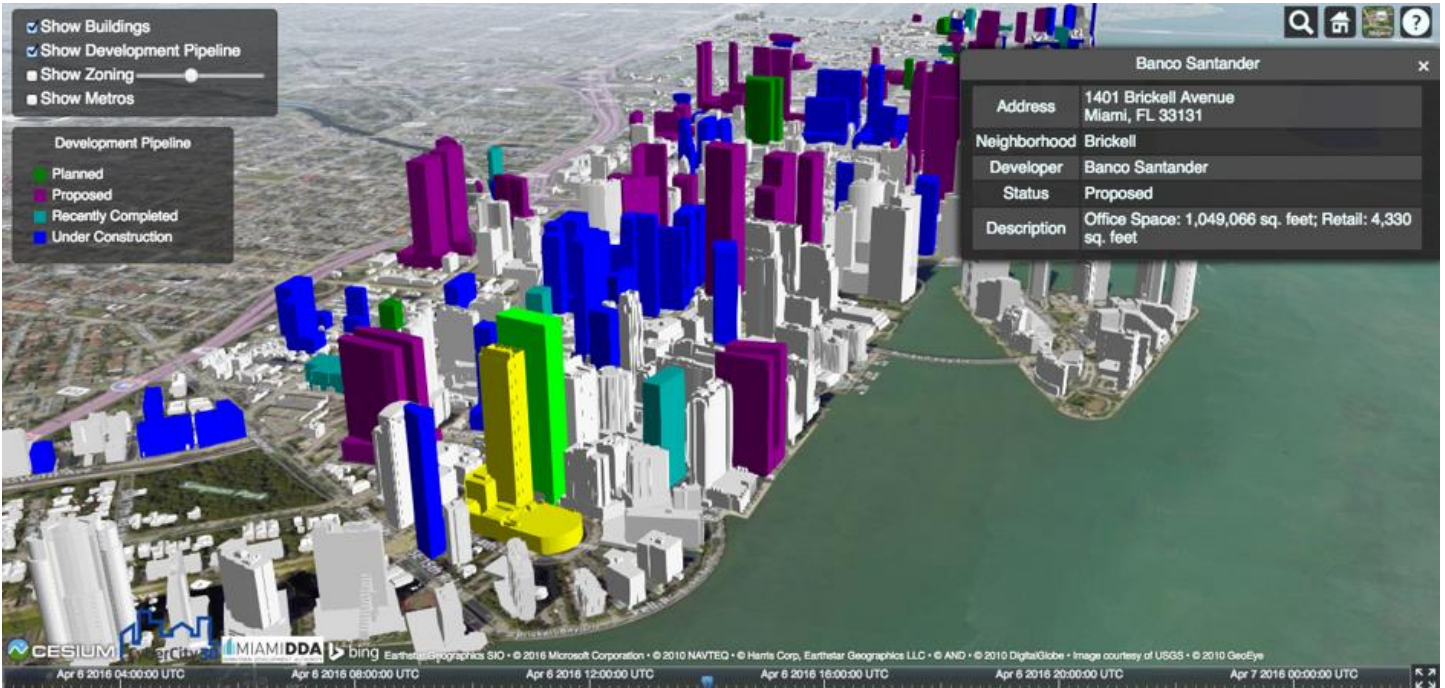
Downtown Miami was traditionally a place where people flocked to by day for work and abandoned at night. In recent years, in part because of the infusion of foreign investment, 23,000 condos have been built, doubling the population to about 80,000.

Last summer, analysts [worried](#) that new condo development had passed its peak. But for now, demand to live downtown [continues to grow](#) enough to fuel a steady mushrooming of new high-rises. According to an inventory provided by the Miami Downtown Development Authority, more than a 112 new structures are currently in the pipeline. These projects are predominantly mixed-use and residential high-rises, but also include buildings meant for retail, entertainment, and affordable housing.

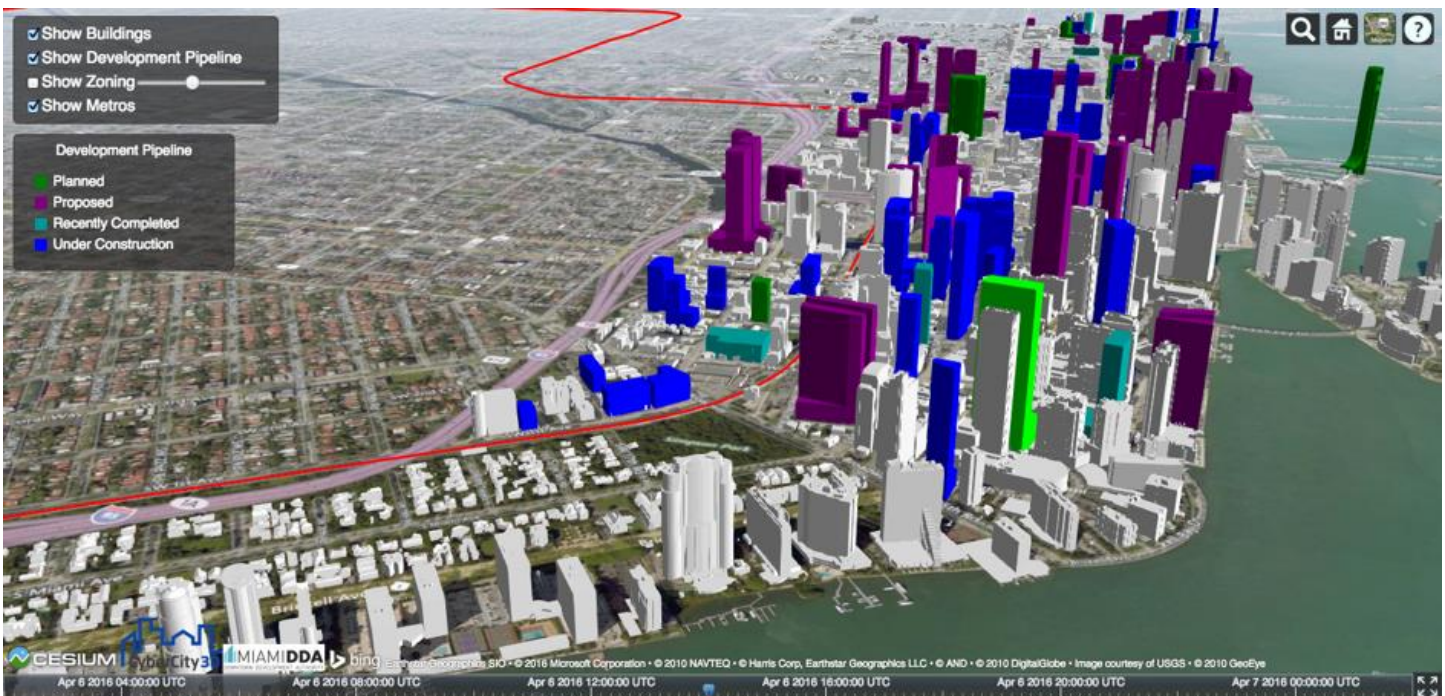
To track the momentum of the spreading towers, the DDA has released this [3D interactive map](#) of downtown Miami, showing all projects proposed, recently completed, or under construction.

"Downtown Miami has joined the ranks of the world's elite cities featuring some of the most renowned architects, developers, and designers who are collectively redefining the Miami skyline," Alyce Robertson, the executive director of the Miami DDA told CityLab. "This map not only puts critical information into the hands of those making real-time investment decisions, it paints a powerful picture of how Miami's skyline is literally being reimaged before our very eyes."

Indeed, it does: The new skyscrapers on the map appear against the backdrop of Miami's existing buildings. Users can toggle between options on a panel in the upper left corner that color-codes the buildings based on the stage of development they're in. Clicking on an individual structure provides details on who's developing it and its intended use:



Users can also highlight the metro route (in the first image below), and zoning regulations (in the second image below):



And unselecting all of the options reveals how dramatically different Miami's downtown will look once these new projects are completed:



This 3D map will be updated on a quarterly basis, or as new projects are announced. Play around with it [here](#).